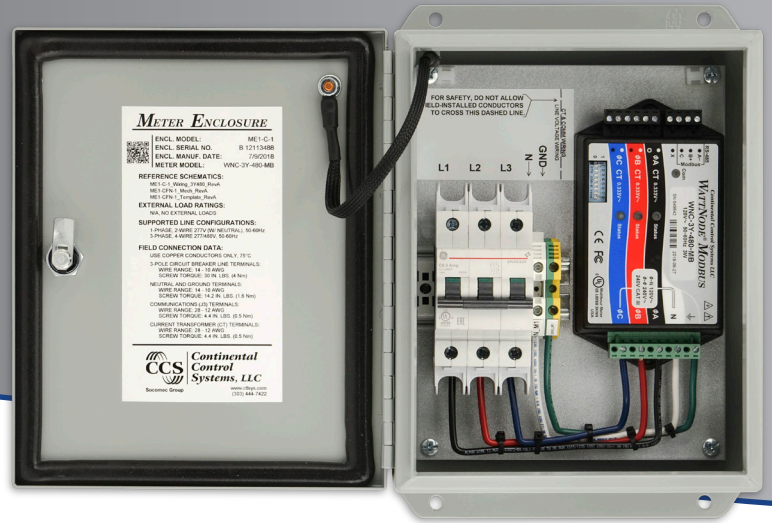


WATTNODE[®] METER ENCLOSURES

Metal or Polycarbonate



Steel enclosure with circuit breaker option

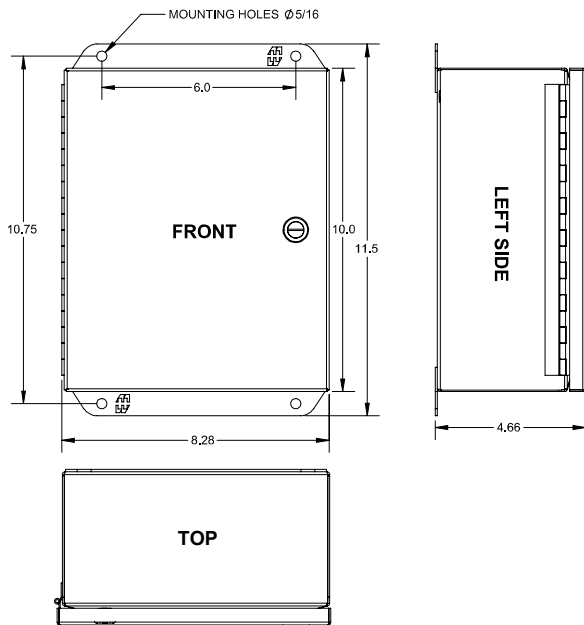
UL 508A NEMA 4 Enclosures

WattNode[®] Meter Enclosures are a NEMA 4 enclosure for the WattNode meter. They are available with a three-phase circuit breaker, a fuse block, or no circuit protection in both 16 gauge steel or polycarbonate construction. The WattNode Meter comes preinstalled when ordered with any enclosure.

Features

- UL 508A Listed Assembly
- NEMA 3R, 4, 12, and 13 rated enclosure
- Waterproof when used with NEMA 4 conduit hubs
- 10 x 8 x 4 inch powder-coated steel or polycarbonate
- External mounting tabs
- Available with circuit breaker, fuses, or no overcurrent protection

Dimensions – Steel and Polycarbonate



Specifications

Field Wiring Connections

- **Line Voltage (L1, L2, and L3):** 12 AWG wire recommended, copper only, 75°C rated
 - **Circuit breaker (ME1-C-1), (PE1-C-1):** 14 to 10 AWG, 30 lbs-in (4 N·m)
 - **Fuse holder (ME1-F-1), (PE1-F-1):** 14 to 10 AWG, 17.7 lbs-in (2 N·m)
 - **Screw terminals (ME1-N-1), (PE1-N-1):** 14 to 10 AWG, 14.2 lbs-in (1.6 N·m)

Electrical

- **Neutral:** Gray screw terminal, 14 to 10 AWG,
- **Ground:** Green/yellow screw terminal, 14 to 10 AWG,
- **A datasheet is available on the WattNode Meter Enclosure page on www.ctlsys.com**

Regulatory

- UL 508A Listed industrial control panel (U.S. and Canada), file number E495898

Environmental

- **Indoor Use:** Suitable for indoor use.
- **Outdoor Use:** Suitable for outdoor use.

WARNING: Direct sunlight exposure may cause overheating

Components

Note: the specific components are subject to change without notice.

- **Circuit Breaker:** GE EP103ULH4C0.5 ElfaPlus, UL 489, 480 Vac, 0.5 A, 10 kA interrupting rating
- **Circuit Breaker Padlock Bracket:** GE 283-190, a padlock bracket is provided for lockout use
- **Fuse Holder:** Littelfuse LPSC0003Z, UL 4248-1 Class CC, 3 poles, 600 Vac, 30 A, 200 kA interrupting rating
- **Fuses:** Bussmann FNQ-R-1/2, Class CC, UL 248-4, 600 Vac, 0.5 A, 200 kA interrupting rating
- **Screw Terminals:** Allen-Bradley 1492-J6, UL 486A-486B, 600 Vac, 30 A
- **General Wiring:** 12 AWG, stranded, 600 V, 90°C, UL style 1015
- **Back Plate:** Galvanized steel

Metal Enclosure

- **Type:** Hammond Eclipse Junior, EJ 1084, UL508A
- **NEMA Rating:** 3R, 4, 12, and 13
 - **Complies:** with IP66
 - **CSA Types:** 3R, 4, 12, and 13
- **Back Panel:** 6.88 by 8.75 inches, 14-gauge galvanized steel

Polycarbonate Enclosure

- **Type:** Allied Moulded Products Polyline®
- **NEMA Rating:** 1, 2, 3, 3R, 4, 4x, 12, and 13
 - **Complies:** with IP66
 - **CSA Types:** 1, 2, 3, 3R, 4, 4x, 12, and 13
- **Optional Enclosure Accessories:** padlock adapter
- **Country of Origin:** USA

Model	Overcurrent Protection	Disconnect	Service Voltages	Cost
*ME1-C-1	Three-phase circuit breaker	Yes	120/480 Vac	\$272.95
*ME1-F-1	Three-phase fuses	No	347/600 Vac	\$299.73
ME1-N-1	None	No	120/600 Vac	\$203.94

Model	Overcurrent Protection	Disconnect	Service Voltages	Cost
*PE1-C-1	Three-phase circuit breaker	Yes	120/480 Vac	\$272.95
*PE1-F-1	Three-phase fuses	No	347/600 Vac	\$299.73
PE1-N-1	None	No	120/600 Vac	\$203.94

*The (M/P)E1-F-1 and (M/P)E1-N-1 models do not contain an internal disconnect switch so some external disconnect switch or circuit breaker is required to disconnect power.

Weight

The following are approximate weights of the completed enclosure with the meter installed.

- **ME1-C-1:** 9.4 pounds (4.3 kg)
- **ME1-F-1:** 8.9 pounds (4.0 kg)
- **ME1-N-1:** 8.6 pounds (3.9 kg)
- **PE1-C-1:** 6.0 pounds (2.7 kg)
- **PE1-F-1:** 5.8 pounds (2.6 kg)
- **PE1-N-1:** 5.4 pounds (2.4 kg)

Ordering

Normally the WattNode Meter Enclosure is ordered with a WattNode meter and the meter will be installed at the factory. If you need to purchase an enclosure without the meter and install the meter later, contact CCS to specify the meter model so that CCS can build the enclosure with the correct UL labeling and wiring diagram.

Conduit Openings: There are no conduit openings in the meter enclosure as shipped, but instructions and templates for adding openings are provided.

WattNode is a registered trademark of Continental Control Systems, LLC.



Socomec Group

2150 Miller Drive, Suite A • Longmont CO 80501 • USA
sales@ctlsys.com • www.ctlsys.com
 (888) 928-8663 • Fax (303) 444-2903

ME1-DS1-4.8.20: Specifications are subject to change