

WATTNODE[®] Electric (kWh and kW) Power Metering

Energy Management • System Monitoring • Submetering

WATTNODE[®] BACNET[®]



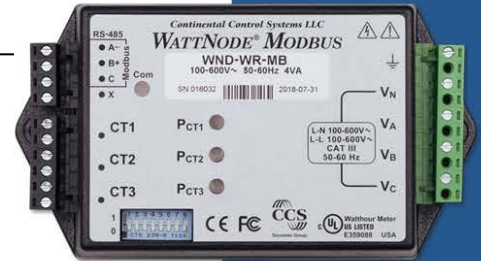
- BACnet MS/TP (RS-485)
- Selectable serial baud rates to 76,800
- Potential transformer ratio support (medium voltages)
- Field upgradable firmware
- 50+ measurements (W, kWh, volts, amps, PF, demand and more)



WATTNODE[®] WIDE-RANGE MODBUS[®] METER



- One model for all utility services
- Measures 100 to 600 Vac, single-phase, three-phase, line/line
- Corrects wiring errors remotely
- Modbus RTU, RS-485, SunSpec Certified
- Supports adjustable baud rates, selectable addressing



WATTNODE[®] PLUS for LONWORKS[®]



- LonWorks network variables (SNVTs)
- Logger option with nonvolatile memory
- Bidirectional Metering: consumption and production
- 30+ measurements (W, kWh, volts, amps, PF, demand and more)
- LonMark[®] version 3.4 certified



WATTNODE[®] PULSE

- Bidirectional Metering: consumption and production
- Single and three phase metering
- Optional pulse output configurations
- Power (Kilowatt-hours), sum and per phase (optional)



Optional LCD display (external)



CURRENT TRANSFORMERS

Accu-CT[®] Split-Core CTs

- Safe, low voltage output, 0.333 Vac
- Primary Ratings: 5 to 600 amps, 600 Vac, 50 or 60 Hz
- UL & cUL, CE, RoHS
- 0.75" and 1.25" opening
- 1 Vac output option
- High accuracy options; CO.6, CO.2



Standard Split-Core, Solid-Core and Bus Bar Series CTs

- Safe, low voltage output, 0.333 Vac
- Multiple Models : 5 to 6000 amps, 600 Vac, 50/60 Hz nominal
- UL & cUL recognized, CE, RoHS
- 0.3" to 10" + openings
- Customs available



WARNING These products can expose you to chemicals including Antimony Trioxide and Diisononyl Phthalate (DINP), which are known to the State of California to cause cancer. For more information go to: www.P65Warnings.ca.gov



WattNode and Accu-CT are registered trademarks of Continental Control Systems, LLC. BACnet is a registered trademark of American Society of Heating, Refrigerating and Air-Conditioning Engineers (ASHRAE). LonWorks, LonMark and LonTalk are registered trademarks of Echelon Corporation.

2150 Miller Drive, Suite A
Longmont CO 80501 • USA
sales@ctlsys.com • www.ctlsys.com
(888) 928-8663 • Fax (303) 444-2903