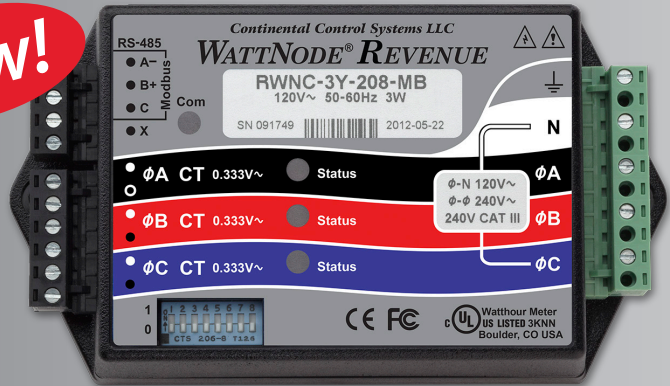


WATTNODE® REVENUE

New!



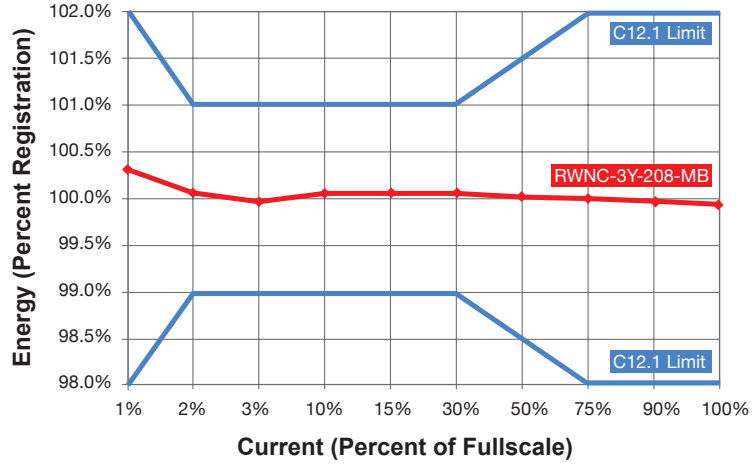
Revenue-grade Energy and Power Meters

The WattNode Revenue meters are designed for use in applications where revenue-grade or utility-grade accuracy is required. The WattNode Revenue meters meet the accuracy requirements of ANSI C12.1 and support Modbus®, BACnet® or LonTalk® communications protocols or a pulse output.

The WattNode Revenue marks a new level of performance for the WattNode brand of electric power meters. The WattNode Revenue electric power meters are optimized for tenant submetering in residential and commercial spaces, PV energy generation metering, UMCS metering on military bases and more.

The WattNode Revenue meters are designed for 120/208 and 277/480 Vac applications. For ANSI C12.1 accuracy, current transformers compliant with IEEE C57.13 Class 0.6 are required. Each meter is calibrated using NIST traceable equipment following the procedures specified by ANSI C12.1 metering standards and is supplied with a certificate of calibration.

ANSI C12 Load Performance Test - RWNC-3Y-208-MB WattNode Revenue



- Meets ANSI C12.1 accuracy standards
- Supplied with NIST traceable certificate of calibration
- Offers bidirectional, true net metering
- 120/208-240 Vac or 277/480 Vac services
- Line powered, compact, easy to install
- Use with safe, low voltage (333 mVac) current transformers
- Available interfaces: BACnet®, LonWorks®, Modbus®, or pulse output

WATTNODE REVENUE for BACnet	WATTNODE REVENUE for Modbus	WATTNODE REVENUE for LonWorks	WATTNODE REVENUE Pulse	CURRENT TRANSFORMERS
<ul style="list-style-type: none"> • Native BACnet MS/TP (RS-485) • Selectable serial baud rates to 76,800 • Field upgradable firmware • 50+ measurements (kW, kWh, volts, amps, PF, demand and more) 	<ul style="list-style-type: none"> • Modbus RTU protocol (RS-485) • Supports 127 DIP switch selectable addresses • 50+ measurements (kW, kWh, volts, amps, PF, demand and more) • Pulse meter input or 5 volt control output (optional) • 100+ data registers 	<ul style="list-style-type: none"> • LonWorks network variables (SNVTs) • Logger option • 30+ measurements (kW, kWh, volts, amps, PF, demand and more) • LNS plug-in (free) 	<ul style="list-style-type: none"> • Low cost, high accuracy kWh pulse output • Bidirectional metering, (consumption and production) • Single and three phase metering, (energy and power) • 3-Single phase meters in one (optional) • Remote display (LCD) available 	<ul style="list-style-type: none"> • Split-core, solid-core, bus bar and mini • High accuracy model meets IEEE C57.13 class 0.6 • Ranges from 15 to 400 amps • Safe 333 mVac output



3131 Indian Road • Boulder, CO 80301 USA
 sales@ccontrolsys.com • www.ccontrolsys.com
 (888) 928-8663 • Fax (303) 444-2903

RWNC-06.07.13: Specifications are subject to change